

Attractive Blekinge

Regional Development Strategy 2014-2020

Euroregion Baltic 2019-09-11

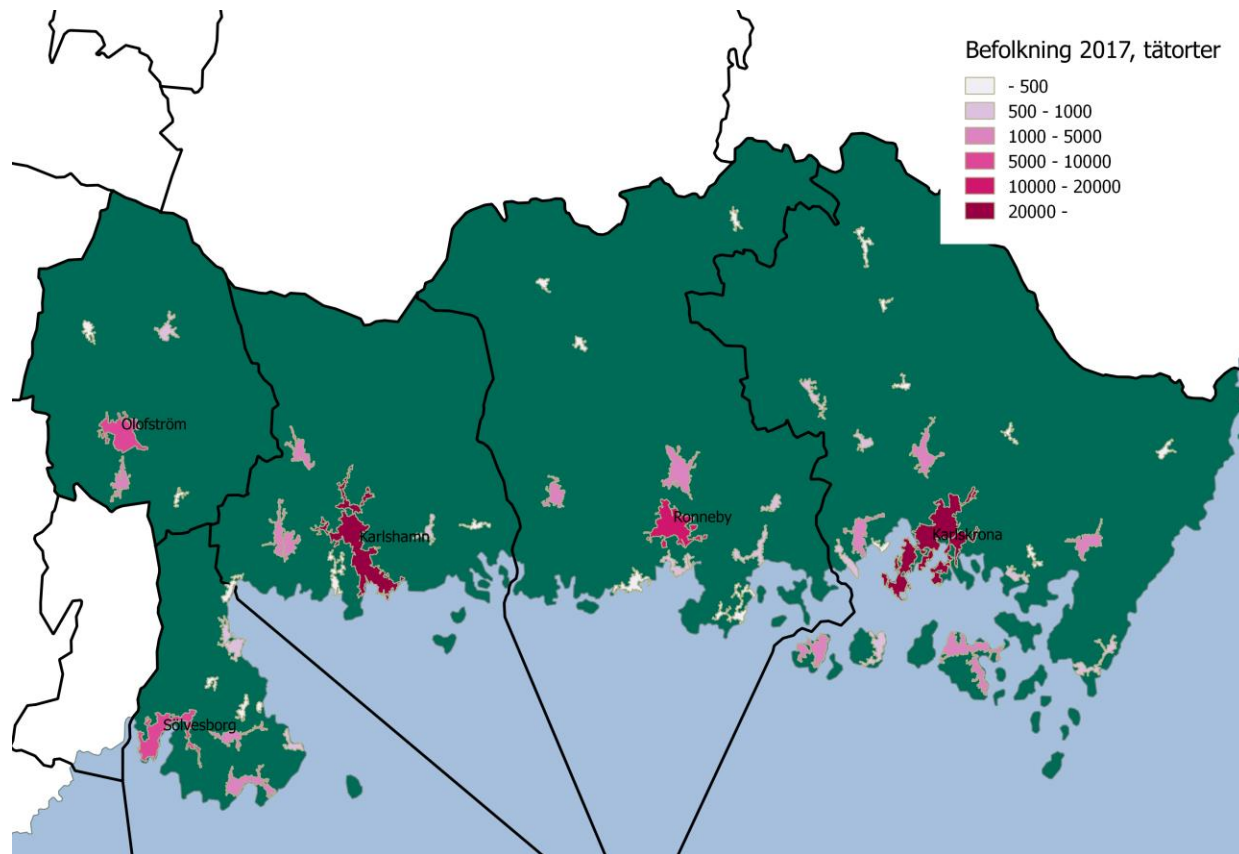


REGION
BLEKINGE

BLEKINGE AT A GLANCE

- 159 000 inhabitants
- Five municipalities
- Cutting edge university
- Nearly a thousand lakes
- 800 islands
- Close to Europe
 - Daily connections to Lithuania and Poland
 - Approximately two hours from Copenhagen

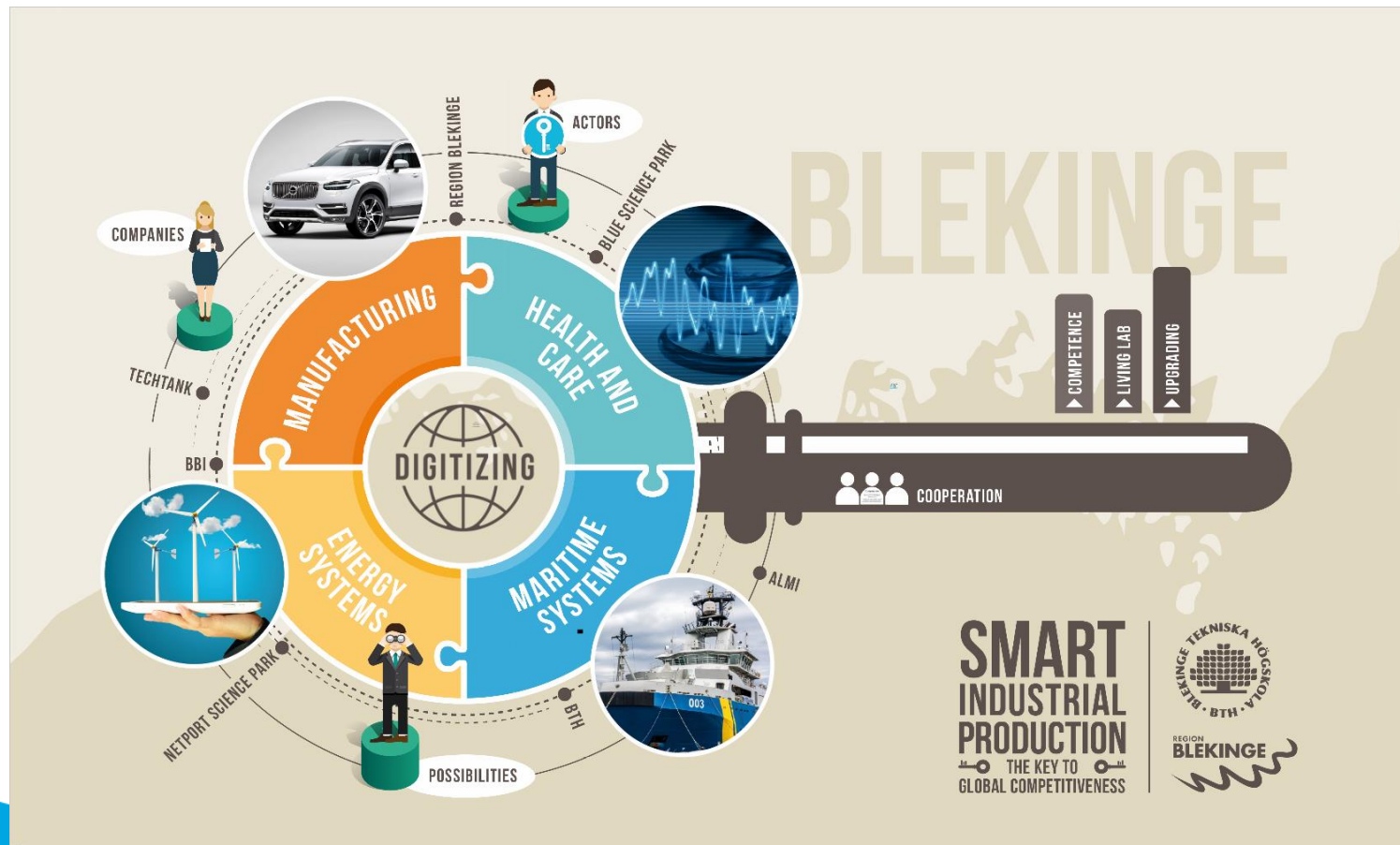




Befolkning

Connecting Europe - from Blekinge point of view





WHERE LIFE AND BUSINESS GROW TOGETHER



PLAY TO WATCH VIDEO



TALENTS



INNOVATION



NETWORKING



ACCESS TO MARKETS



TANGIBLE ASSETS

“Business Blekinge is a cooperation
between academy, clusters, science parks,
municipalities and regional authorities”



REGION BLEKINGE – what we do

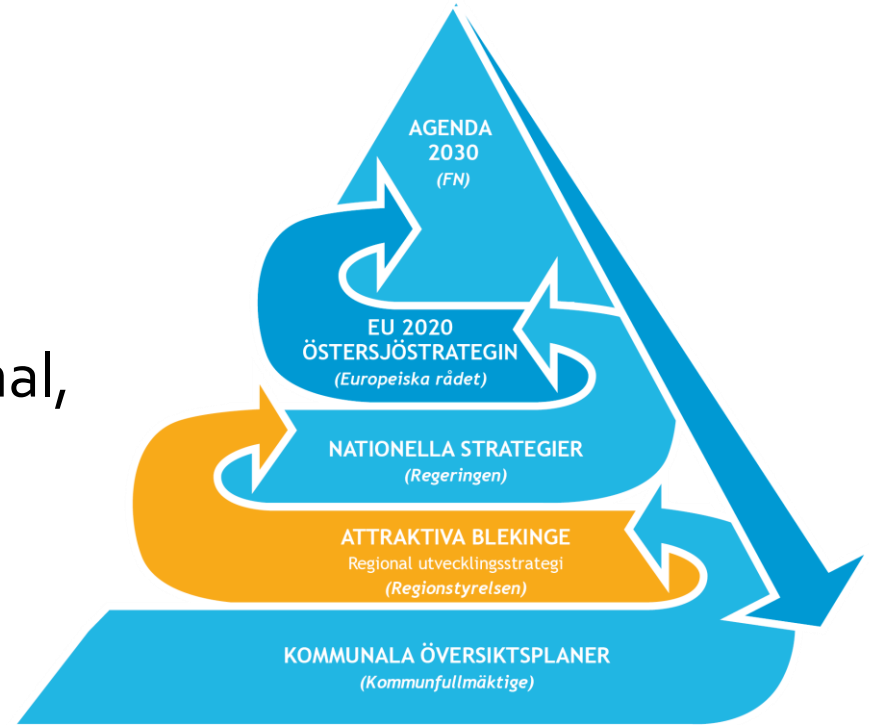
- Regional growth and development
 - Regional Development strategy
"Attractive Blekinge"
- Areas of responsibility
 - Transport and infrastructure
 - Public transport planning
 - Culture
 - Tourism
 - Labour market and skills development
 - Business and innovation
 - Project funds and financing
 - ... and more

Fyra insatsområden



Regional Development Strategy

The link between EU, national, regional and local level



Sustainable Regional Development

- Agenda 2030
- Ekologisk, ekonomisk och social hållbarhet
- Jämställdhet, jämlikhet och mångfald



How's Blekinge doing?



Guest nights



Habitants



Demogrhapgy



Parental leave (short term)



Education



Health



Employment



Newly started Companies



Public travel



CO2 emission



Housing



Broad Band

WHY INTERNATIONAL COOPERATION?

- Capacity building – learning from others experiences
- Strategic development solving common problems
- Removing hindrances and bottlenecks for cross-border activities
- Joint policy statements on regional/national/EU-level
- The bonus effect:
 - The Inter Cultural dimension of learning and skills development

PROJECT PORTFOLIO

Strategic development projects with international partners (examples)

Tourism

Attractive Hardwoods
Outdoor Tourism
South Baltic Programme

JOHANN
Cruise Ship Tourism
South Baltic Programme

- **DUNC**
UNESCO Natural and cultural assets
South Baltic Programme

Sustainability

- **DiveSmart Baltic**
Coast Guard cooperation
BSR programme

- **BEA-App**
Spatial Planning
BSR programme

- **Low Carbon Logistics**
CO2 reduction
South Baltic Programme

Labour market

- **BBVET**
Business in Vocational
education and training
South Baltic Programme
- **Tech Tank**
Industrial Skills developm
ERDF, Regional programme
- **Test-Arena Blekinge**
Innovation and growth
ERDF, regional programme

Connectivity

- **TENTacle**
TEN-T corridor network
BSR Programme
- **TRAM**
Transport EU-Policies
Interreg Europe
- **Mobile Together**
Ride-sharing communities
South Baltic Programme
- **Interconnect**
Cross-border public
transport
South Baltic Programme

EUROREGION BALTIC TOWARDS 2030

Thematic areas of special interest for joint activities and joint political action:

- Dialogue on sustainable regional **transport, infrastructure** and **mobility** development based on port and hinterland connections.
- Network dialogue and cooperation within “**green**” and **sustainable maritime** issues with focus on the joint sea and water quality, as well as coastal spatial planning.
- Network dialogue and cooperation within sustainable and “**blue**” **maritime** development for increased **attractiveness, innovation and business development** for the South Baltic area

An aerial photograph of a coastal region in Blekinge, Sweden. The image shows a large body of water with numerous small, green islands and peninsulas. In the foreground, a small village with several houses and a church is visible on a peninsula. The water is a deep blue, and the sky is clear. The word "BLEKINGE" is written in large, white, sans-serif capital letters across the bottom left of the image.

BLEKINGE