

The WaterMan project

Urban raingarden at public swimming pool

Magdalena Gajewska
Gdańsk University of Technology

Jerzy Butkiewicz
Braniewo Municipality





Municipal Sports Center „Zatoka”

↳ Recreation & Rehabilitation Complex „Healthy Braniewo”

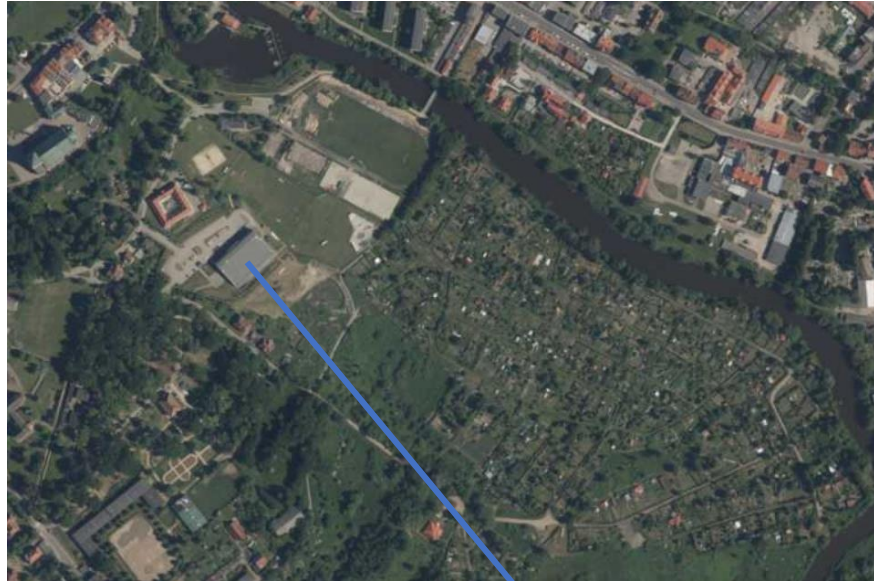
Infrastructure:

- **Indoor pool complex:**

- sport swimming pool
- leisure pool with wading pool
- SPA bath

- **Wellness facilities:**

- sauna rooms (x2)
- gym
- massage parlour
- rest zone
- tanning beds



[Source: geoportal.gov.pl]

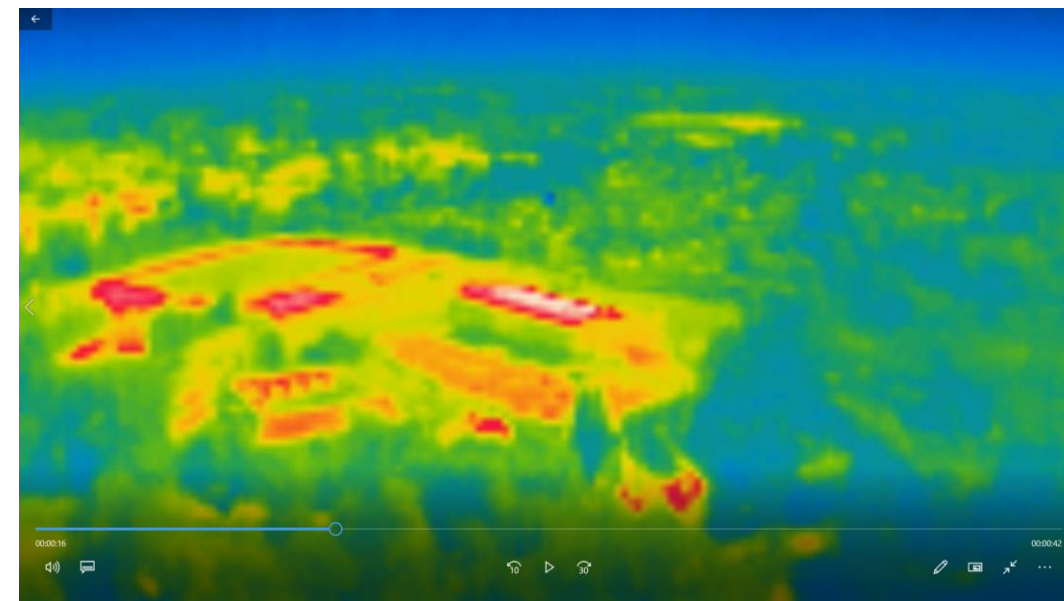
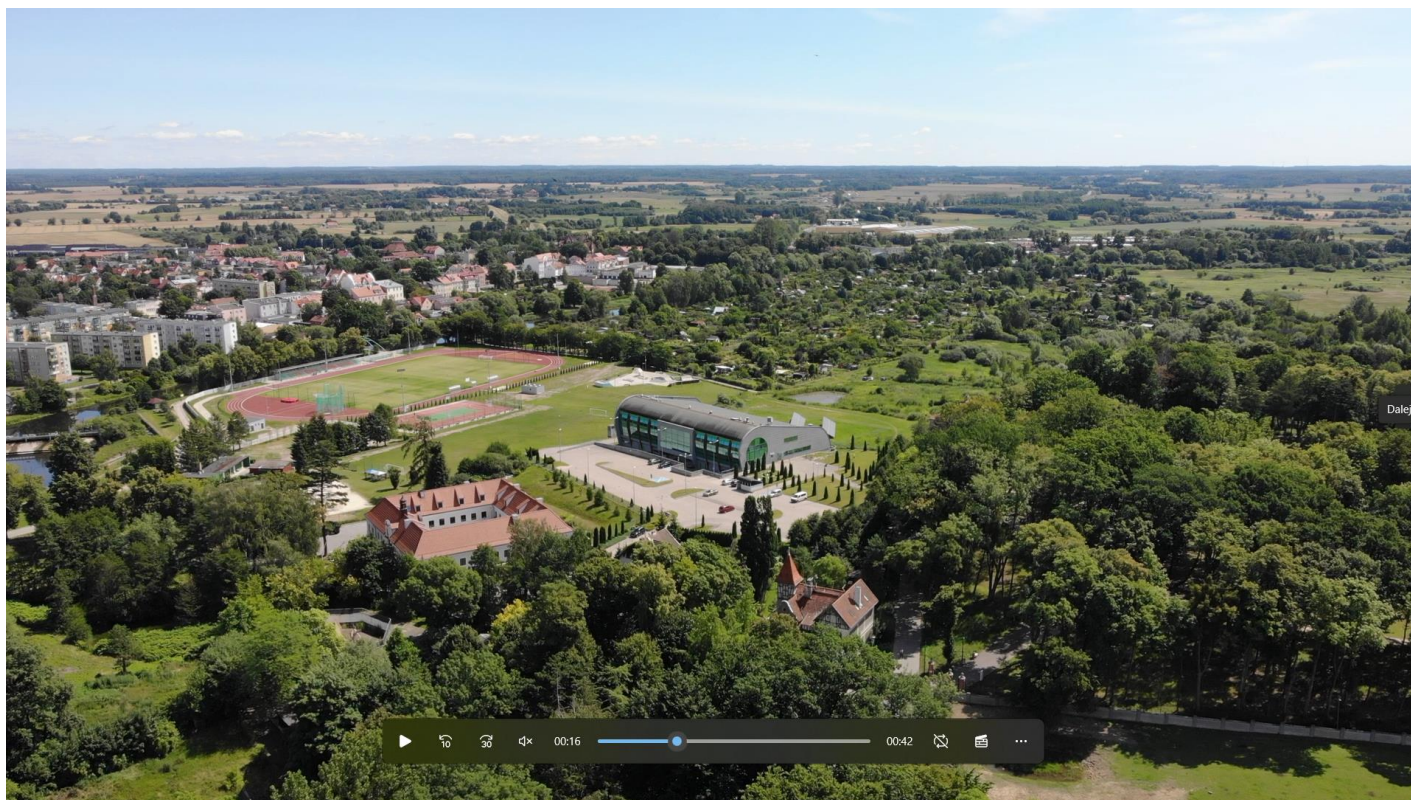
Location:

Łąkowa 1 Street, Braniewo, Poland



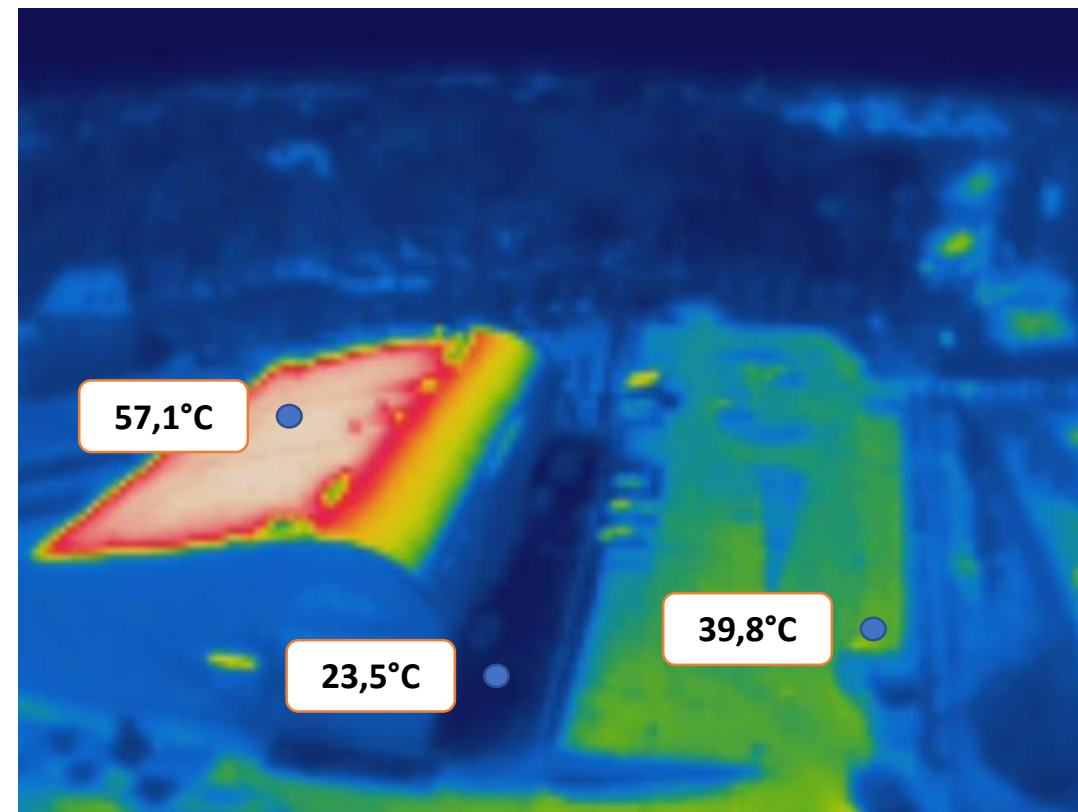
Problems

Creating urban rain gardens in the Municipal Sports Centre



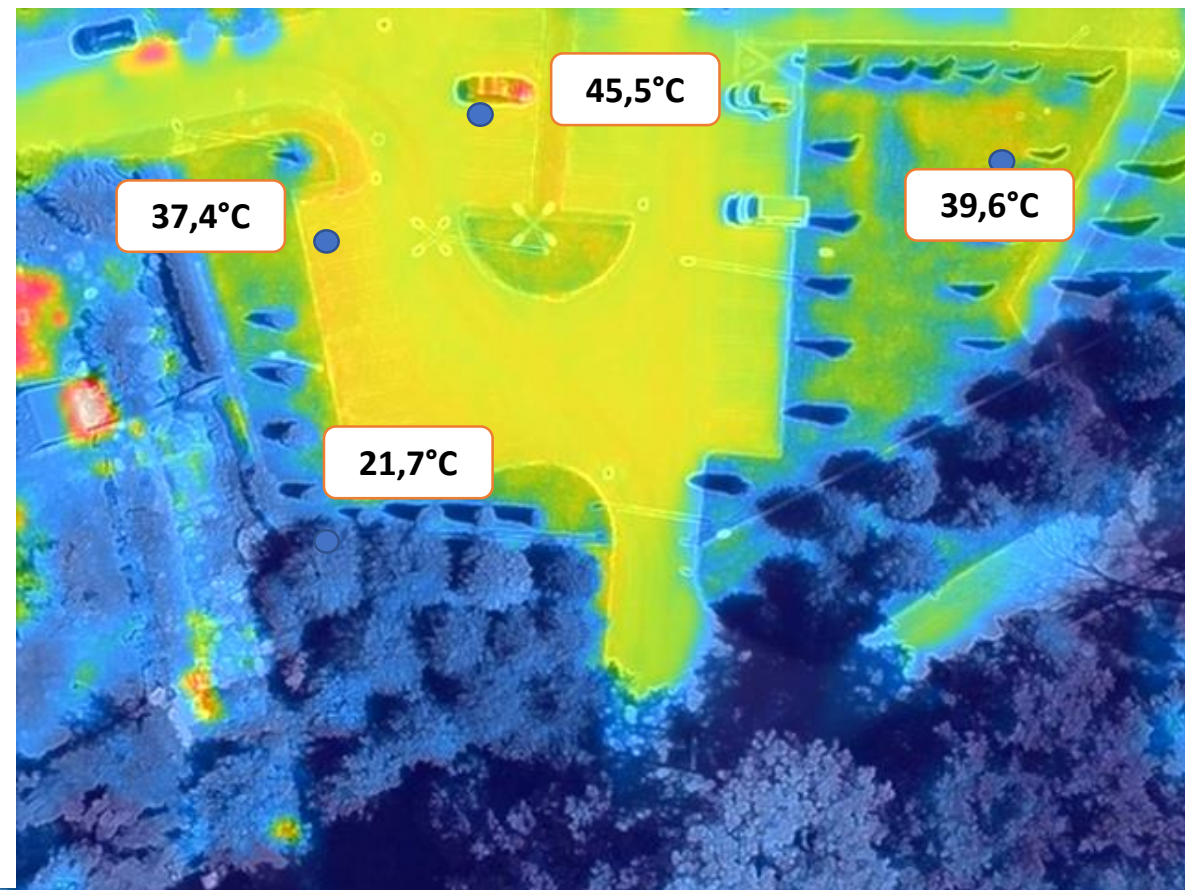
Problems

Creating urban rain gardens in the Municipal Sports Centre

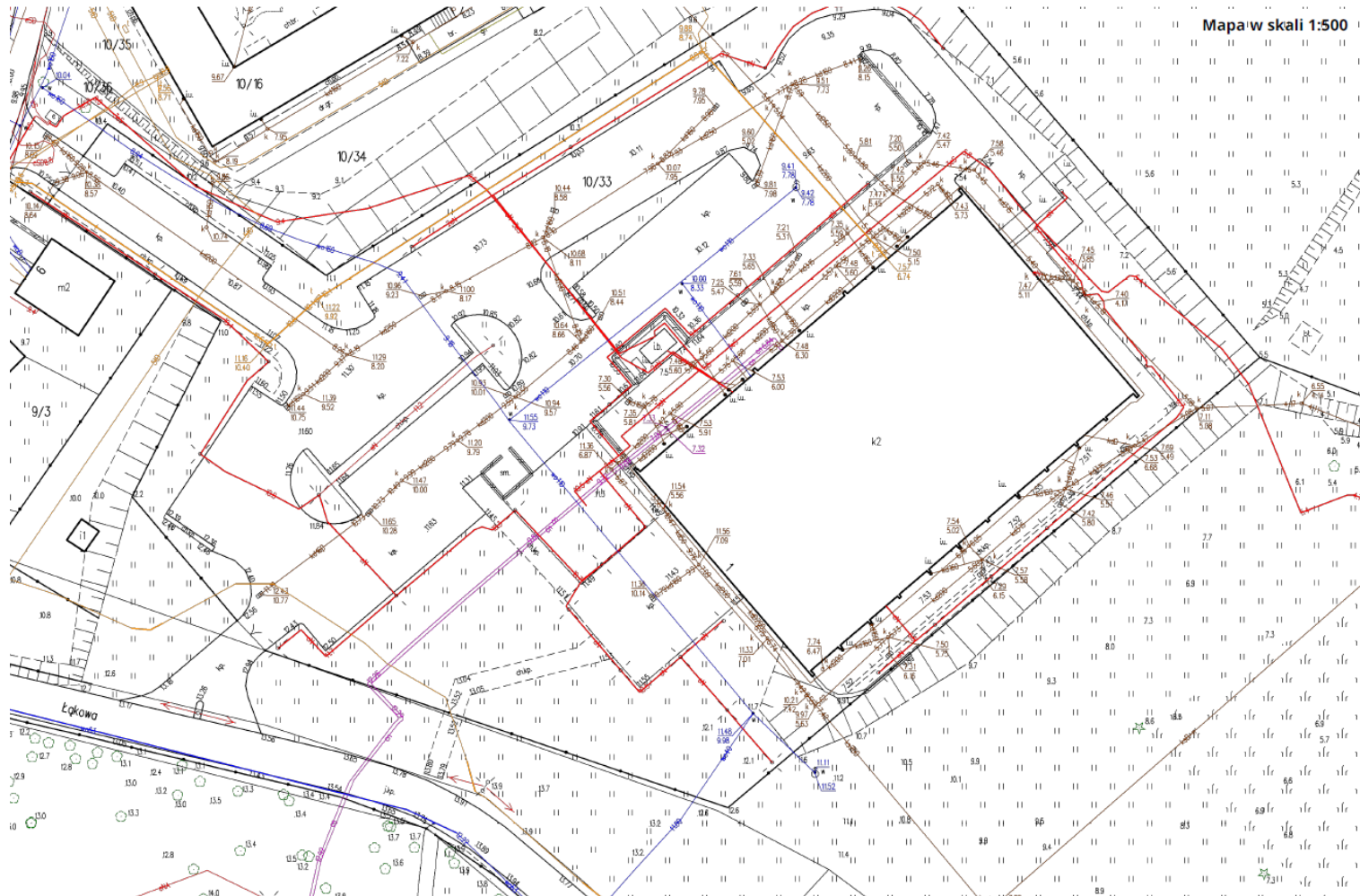


Problems

Creating urban rain gardens in the Municipal Sports Centre



Creating urban rain gardens in the Municipal Sports Centre



Catchment area:
~ 10 000 m²

Main assumption - precipitation to manage:
30 mm from each m² of impermeable pavement

Roof area:
~ 2 000 m²



Rain water volume:
~ 65 m³

Parking area:
~ 3 500 m²



Rain water volume:
~ 125 m³

Street area:
~ 800 m²

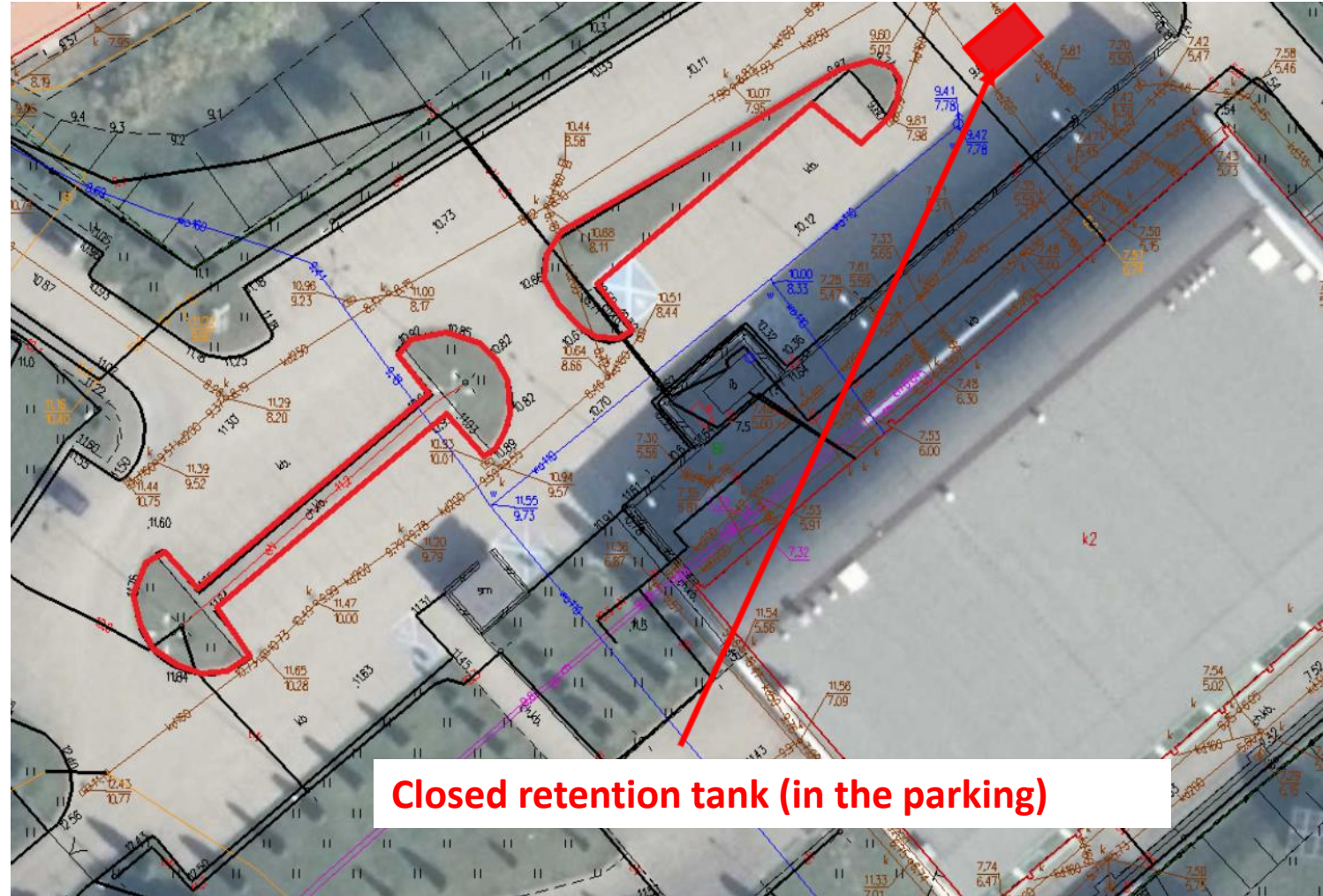
Braniewo - study visit & discussion

Creating urban rain gardens in the Municipal Sports Centre



The works covered the flowerbed area in the middle of the parking lot (290 m²)

A plan was adopted that focused primarily on managing stormwater runoff from the parking lot. This will also reduce the urban heat island.



Closed retention tank (in the parking)

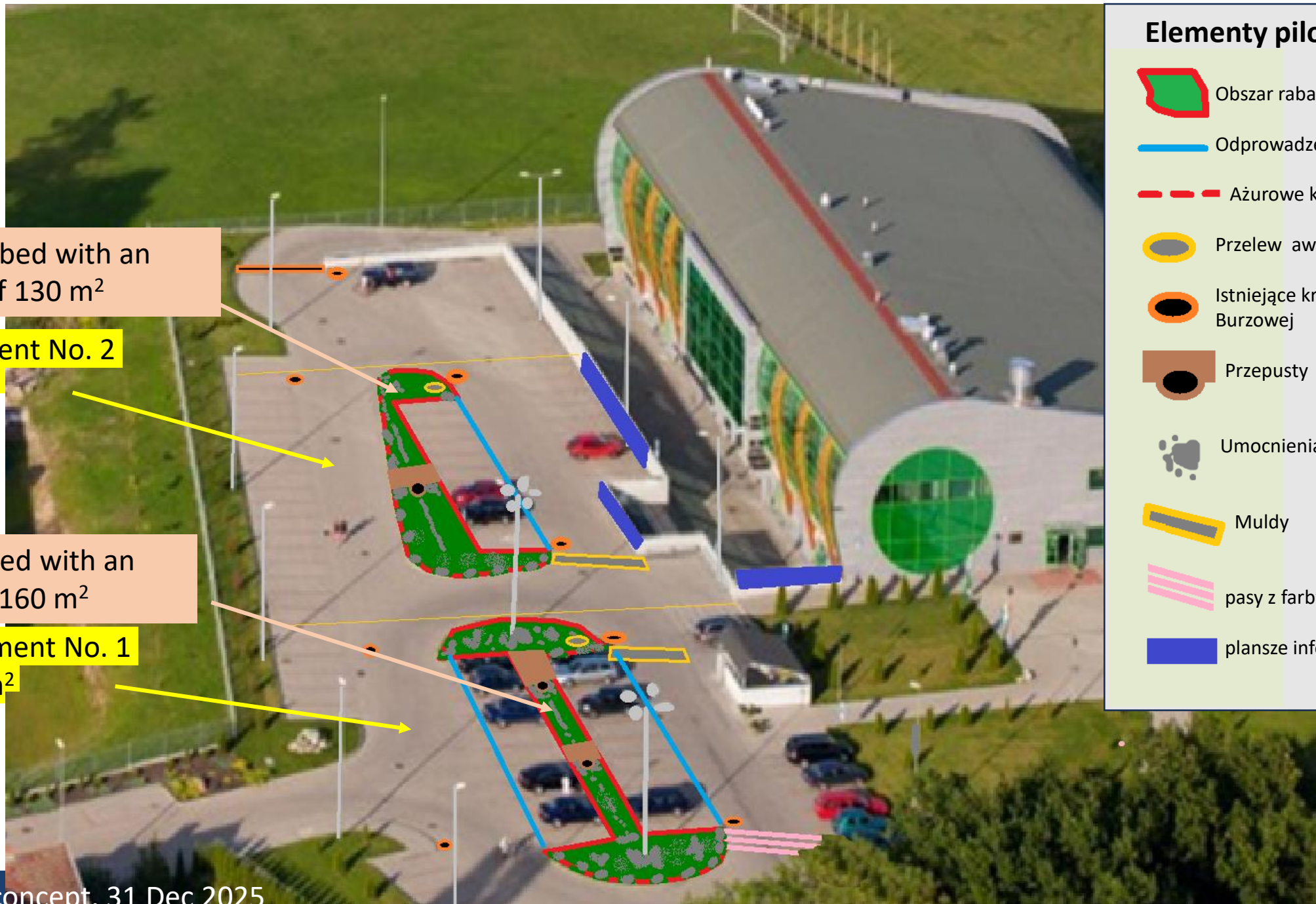
Creating urban raingardens in the Municipal Sports Centre



Work sequence:

1. Digging depressions
2. Reconstruction of curbs
3. Partial soil replacement
4. Installation of supporting stones
5. Installation of culverts
6. Installation of emergency overflows
7. Construction of linear drainage
8. Construction of road troughs/ speed bumps
9. Supplementing the substrate for plant growth
10. Planting plants
11. Reinforcing the flowerbeds with burlap and stone

The rate and level of filling of the depressions were constantly monitored during heavy rainfall.



flowerbed with an area of 130 m²

Catchment No. 2
550 m²

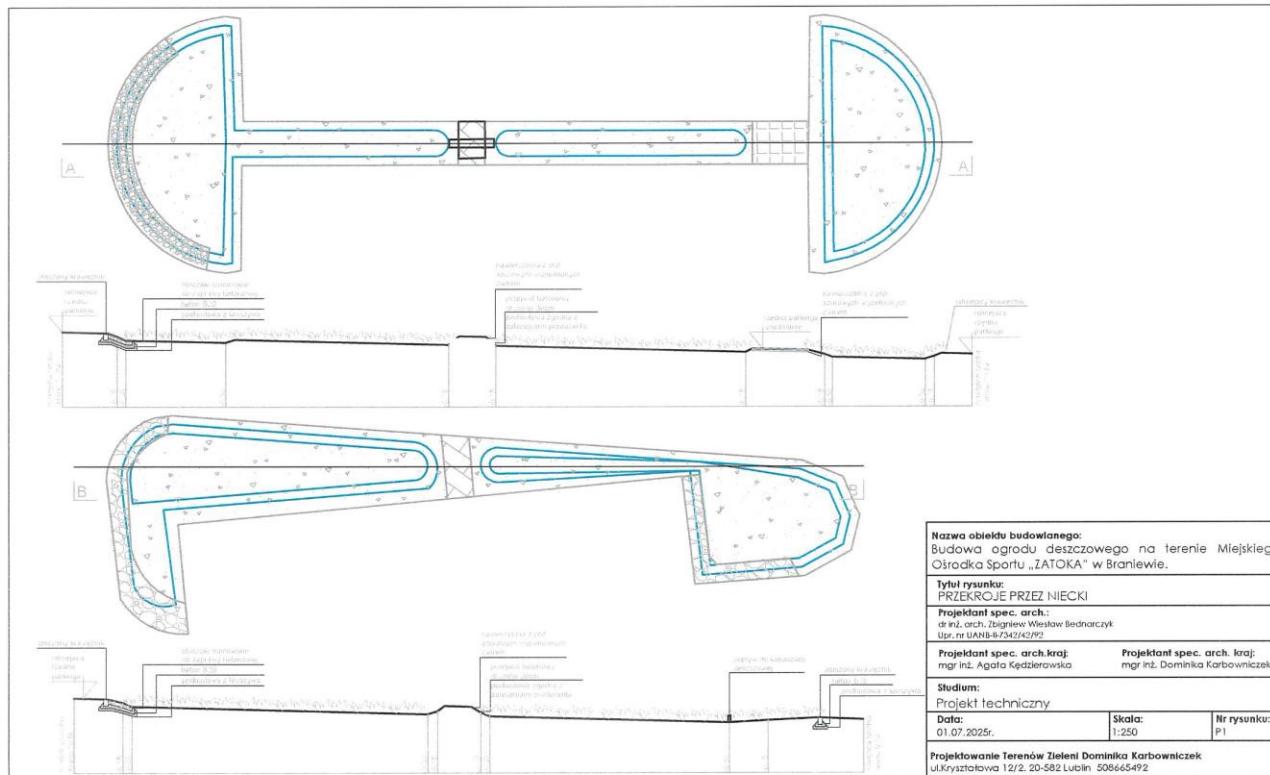
flowerbed with an area of 160 m²

Catchment No. 1
800 m²

Elementy pilota

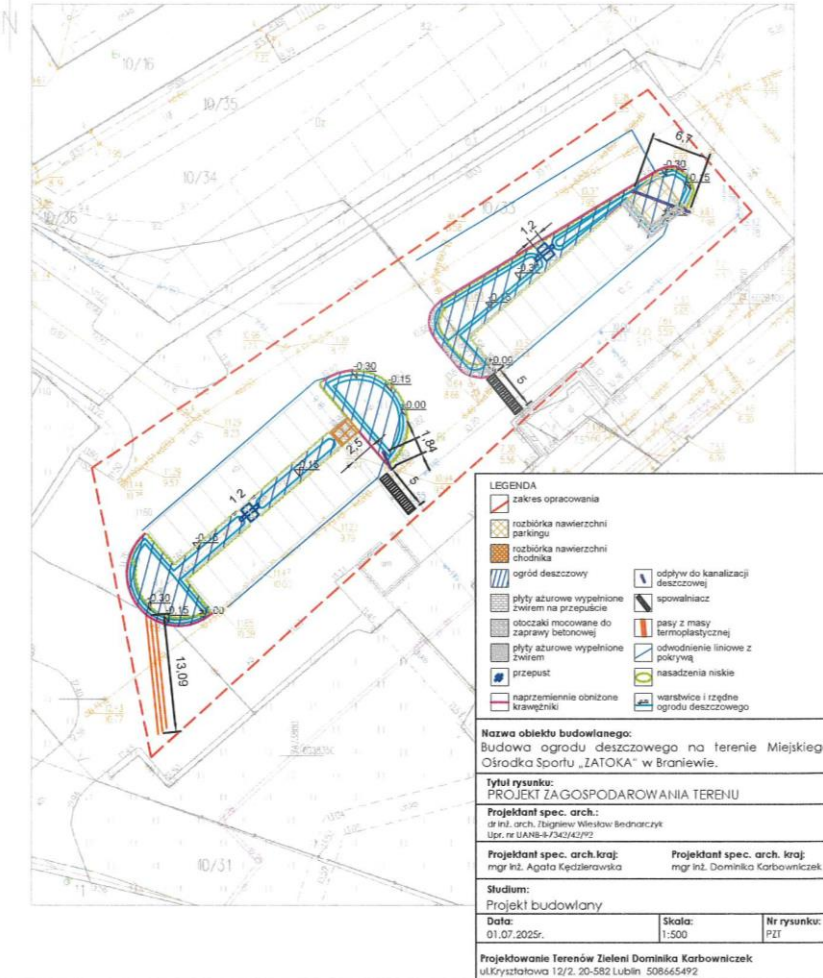
- Obszar rabaty
- Odprowadzenie liniowe
- Ażurowe krawężniki
- Przelew awaryjny
- Istniejące kraty sieci Burzowej
- Przepusty
- Umocnienia z kamienia
- Muldy
- pasy z farby natryskowej
- plansze informacyjne

Design and construction

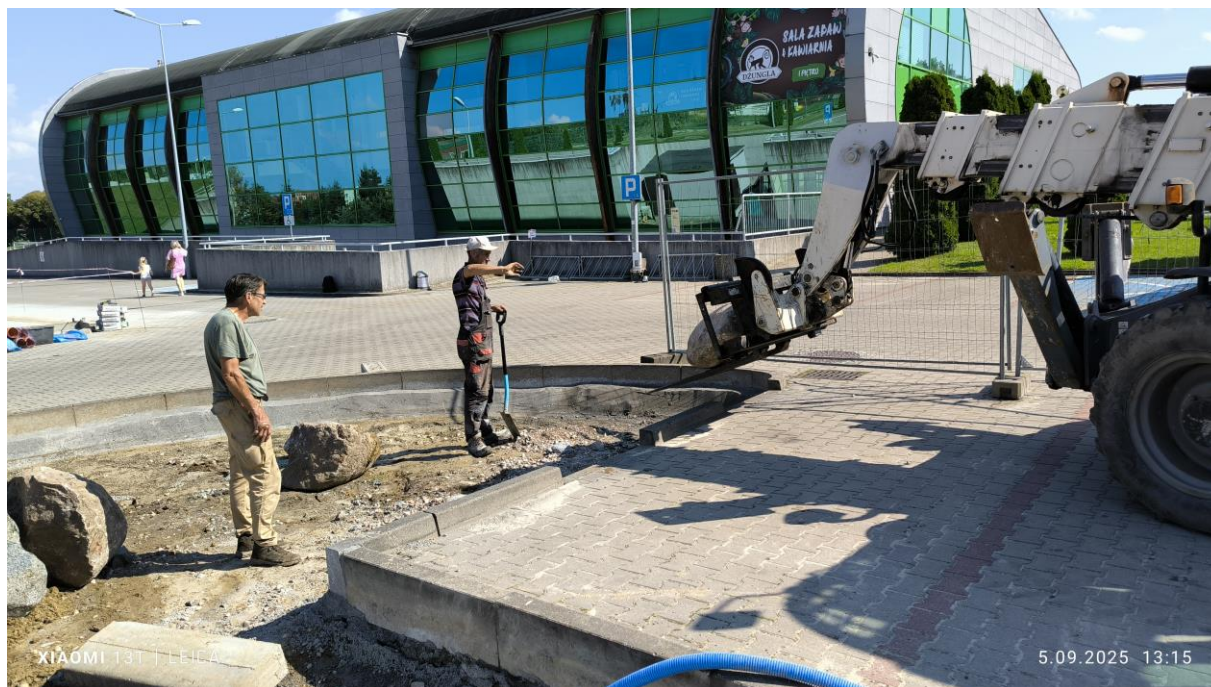


Mapa zasadnicza
Skala 1:500

Województwo: warmińsko-mazurskie
Powiat: braniewski
Jednostka ewidencyjna: MIASTO BRANIEWO
Obręb: BRANIEWO 08



CONSTRUCTION August/September 2025

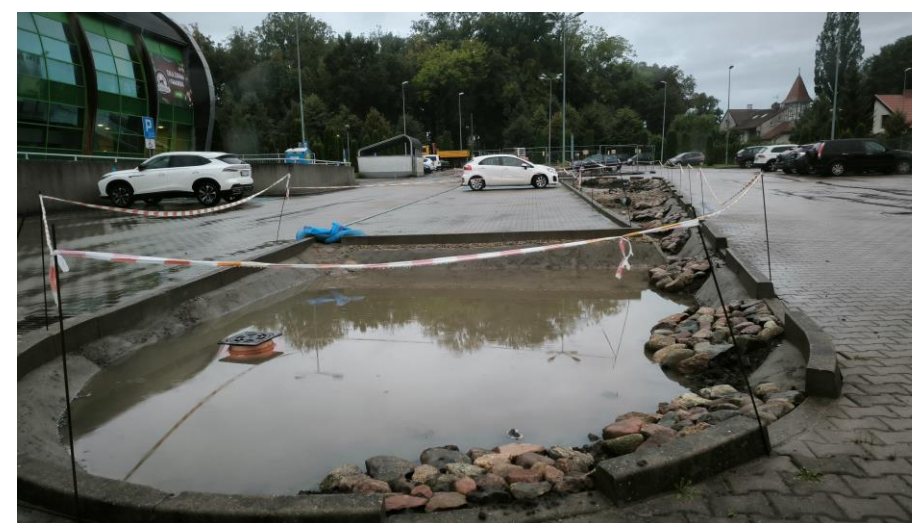








Creating urban raingardens in the Municipal Sports Centre



Rain is the best evaluator



Benefits: Creating urban rain gardens in the Municipal Sports Centre

1. reducing the urban heat island effect
2. improved drainage of the car park area and use of rainwater, which has so far been discharged into the drainage system to irrigate greenery and increase soil moisture - mitigating thermal conditions
3. improvement of the local microclimate (air circulation, air purification from pollutants (dust, etc.),
4. aesthetics of the space and increasing its attractiveness for visitors to the MSC (small architecture, camouflage greenery)
5. economical approach to greenery maintenance
6. increasing the awareness of the inhabitants of Braniewo regarding climate change and the operation of green infrastructure.





Helpdesk / Contacts for further information:

Magdalena Gajewska

mgaj@pg.edu.pl

+48 508 084 149

Jerzy Butkiewicz

jerzy.butkiewicz@braniewo.pl

+48 531 120 930

The „BSR Water Recycling Toolbox” was elaborated as part of the project “WaterMan - Promoting water reuse in the Baltic Sea Region through capacity building at local level”, The project is co-financed by the European Union (European Regional Development Fund) and implemented within the Interreg Baltic Sea Region Programme. More information:

eurobalt.org/WaterRecyclingToolbox
interreg-baltic.eu/project/waterman

WaterMan promotes a region-specific approach to water recycling, which intends to use the alternation of too much and too little water that has become typical in the Baltic Sea Region to make the local water supply more resilient, and supports municipalities & water companies in adapting their strategies.

The contents of „BSR Water Recycling Toolbox” are the sole responsibility of the authors and can in no way be taken to reflect the views of the European Union, the Managing Authority or the Joint Secretariat of the Interreg Baltic Sea Region Programme.

