

# BORNHOLM

Recycling treated wastewater  
for agricultural use

Interreg  
Baltic Sea Region



Co-funded by  
the European Union

SUSTAINABLE WATERS  
WaterMan

**Type of pilot measure:**

Real-world testing

**Location:**

Svaneke, Bornholm island  
(Denmark)

**Water source:**

Treated municipal wastewater

**Type of treatment:**

Slow sand filter (SSF)

**Target water quality:**

Quality class D according to  
Directive (EU) 2020/741

**Utilisation:**

Irrigation of agricultural land  
in the immediate vicinity  
of the WWTP

**Return to natural cycle:**

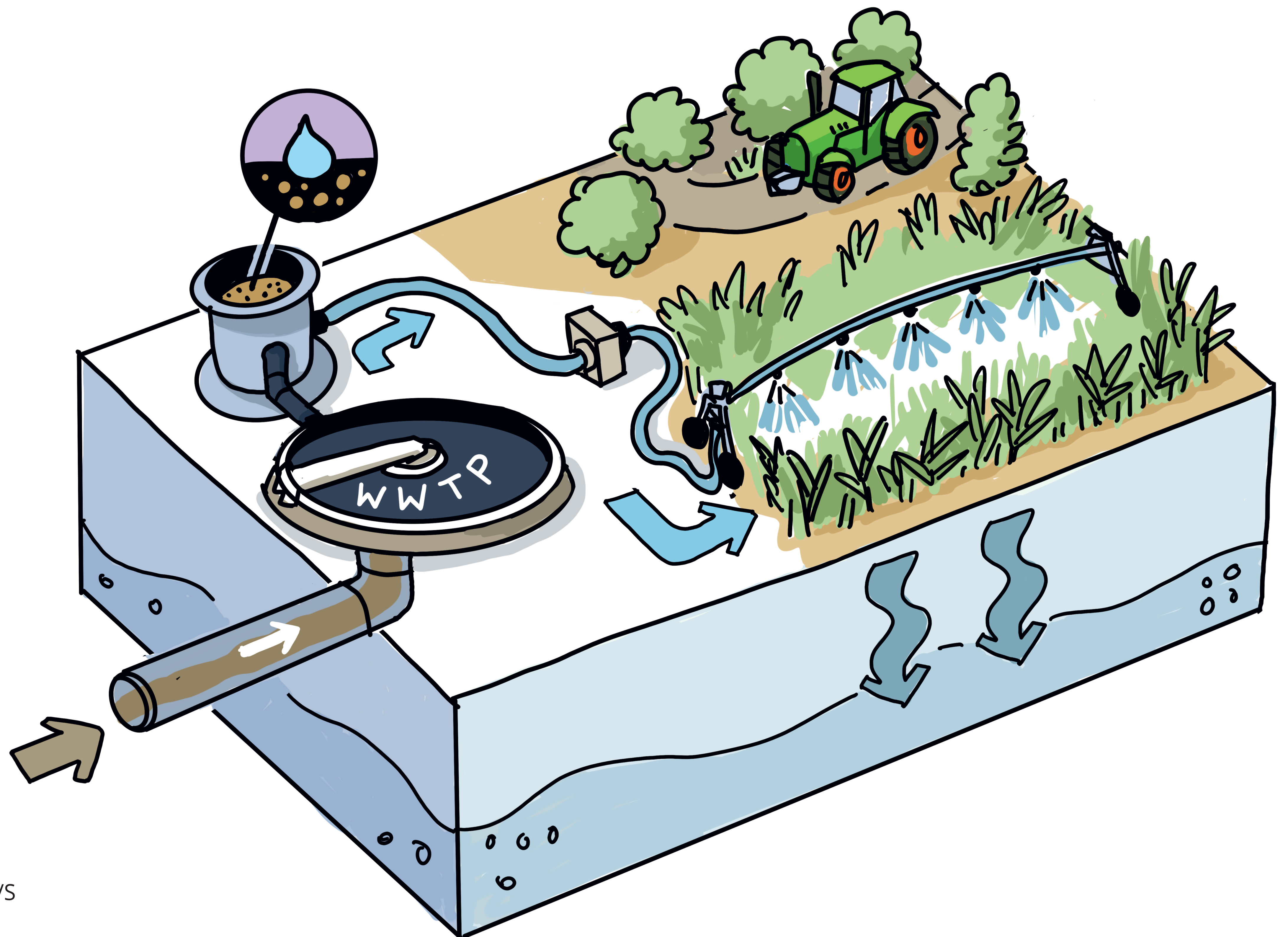
Infiltration

**Responsible:**

BEOF – Bornholm’s Energy & Utility Co. A/S

**Operational & open for visitors:**

Since September 2024



On the island of Bornholm, treated municipal wastewater from a wastewater treatment plant is purified using a slow sand filter (SSF) to make it suitable for the irrigation of agricultural land. An important component of this long-established filtration technology is what is referred to as a “biofilm”, a biological layer in the sand filter that contributes significantly to the reduction of microorganisms and the improvement of water quality. This layer must be removed, and the filter cleaned on a regular basis.

In certain terrains, the SSF does not require a pumping mechanism, which makes it an energy-efficient solution. In addition, the water can be distributed to neighbouring farms using simple, inexpensive plastic pipes.

**Contact for on-site visits & further information:**

Paulo Martins Silva  
Bornholm Energy & Utility Co. A/S  
pas@beof.dk  
+45 40 243 932

