

GARGŽDAI

Stormwater retention pond for water recycling in municipal services

Interreg
Baltic Sea Region



Co-funded by
the European Union

SUSTAINABLE WATERS
WaterMan

Type of pilot measure:

Real-world implementation

Location:

Gargždai (Lithuania)

Water source:

Stormwater collected in a retention pond

Type of treatment:

Natural purification through sedimentation and biodegradation in the pond ecosystem

Target water quality:

Water class D (EU Regulation 2020/741)

Utilisation:

Street cleaning, irrigation of urban green spaces

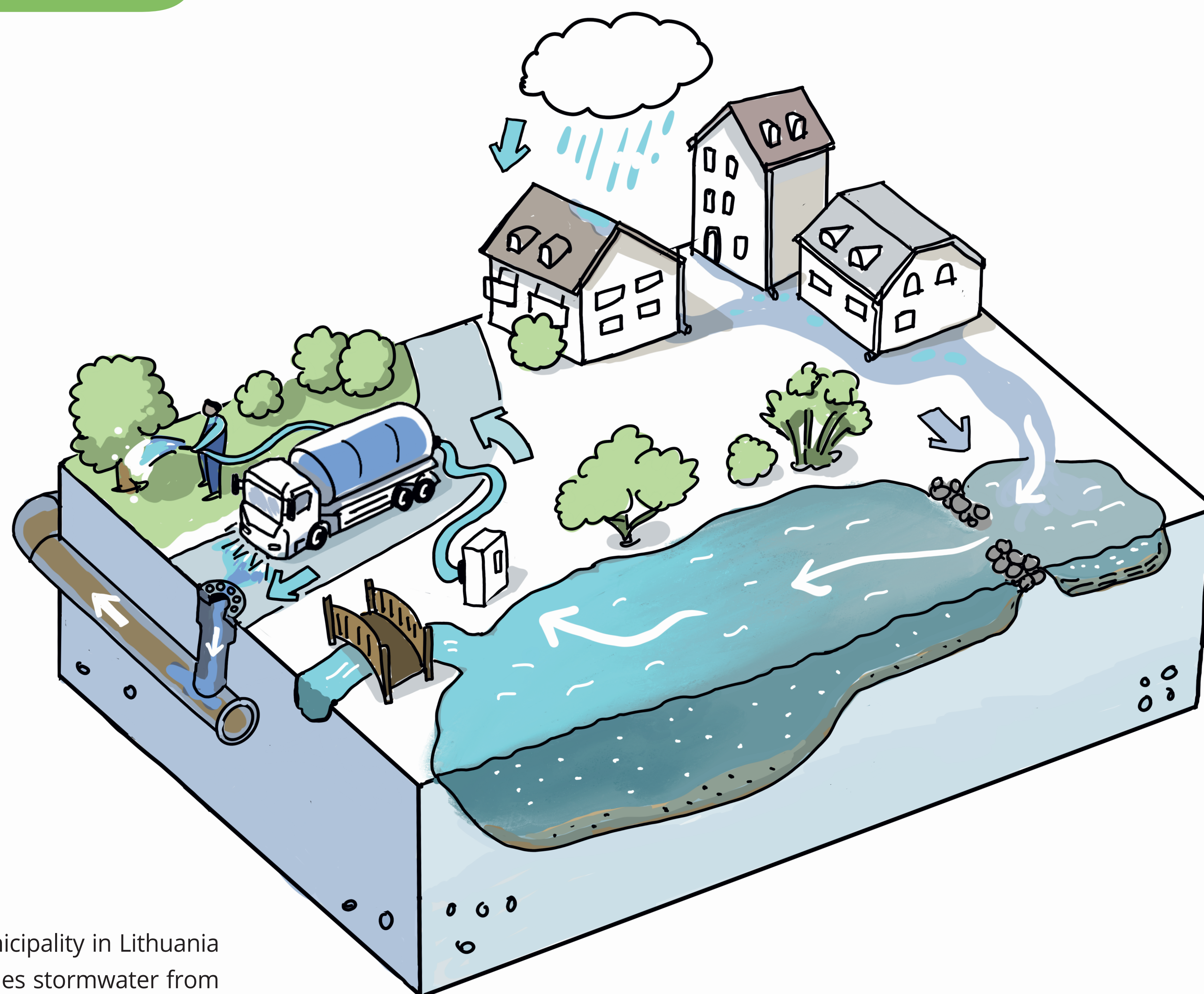
Return to natural cycle:

Infiltration and discharge into the sewage system

Responsible:

Klaipėda District Municipality,
Klaipėda University

Operational & open for visitors: Since September 2025



The pilot measure conducted in the Klaipėda District Municipality in Lithuania created a retention pond that collects and naturally purifies stormwater from a 110-hectare residential area in the town of Gargždai. It is the first retention pond in Lithuania specifically designed for water recycling.

As the water flows from higher to lower levels, various sedimentation processes take place: coarse sediments settle in an upstream basin, while the finer sediments settle further downstream in the main pond, where additional pollutant degradation occurs. The system operates without the need for additional technical equipment, relying entirely on the natural purification capacity of the ecosystem.

The retained water is already being used for street cleaning and for watering green spaces – potentially saving up to 300 cubic metres of drinking water per year. In the coming years, further concepts for its use will be developed in collaboration with other municipalities, water companies and parties interested in innovative water management solutions. In addition, the pond creates natural habitats, enhances biodiversity and provides recreational value for the local community.

Contact for on-site visits & further information:

Mindaugas Šatkus
Klaipėda District Municipality
Administration
mindaugas.satkus@klaipedos-r.lt
+370 683 260 83

Valdas Langas
Klaipėda University
vlangas@hotmail.com
+370 688 749 25

