

# Retention pond for water recycling

## Technical specification

**Interreg**  
Baltic Sea Region



Co-funded by  
the European Union



SUSTAINABLE WATERS

**WaterMan**

# TECHNICAL PROJECT FOR A SURFACE WATER TREATMENT PLANT - RETENTION POND WITH WATER REUSE

UAB „Inžinerinis projektavimas“

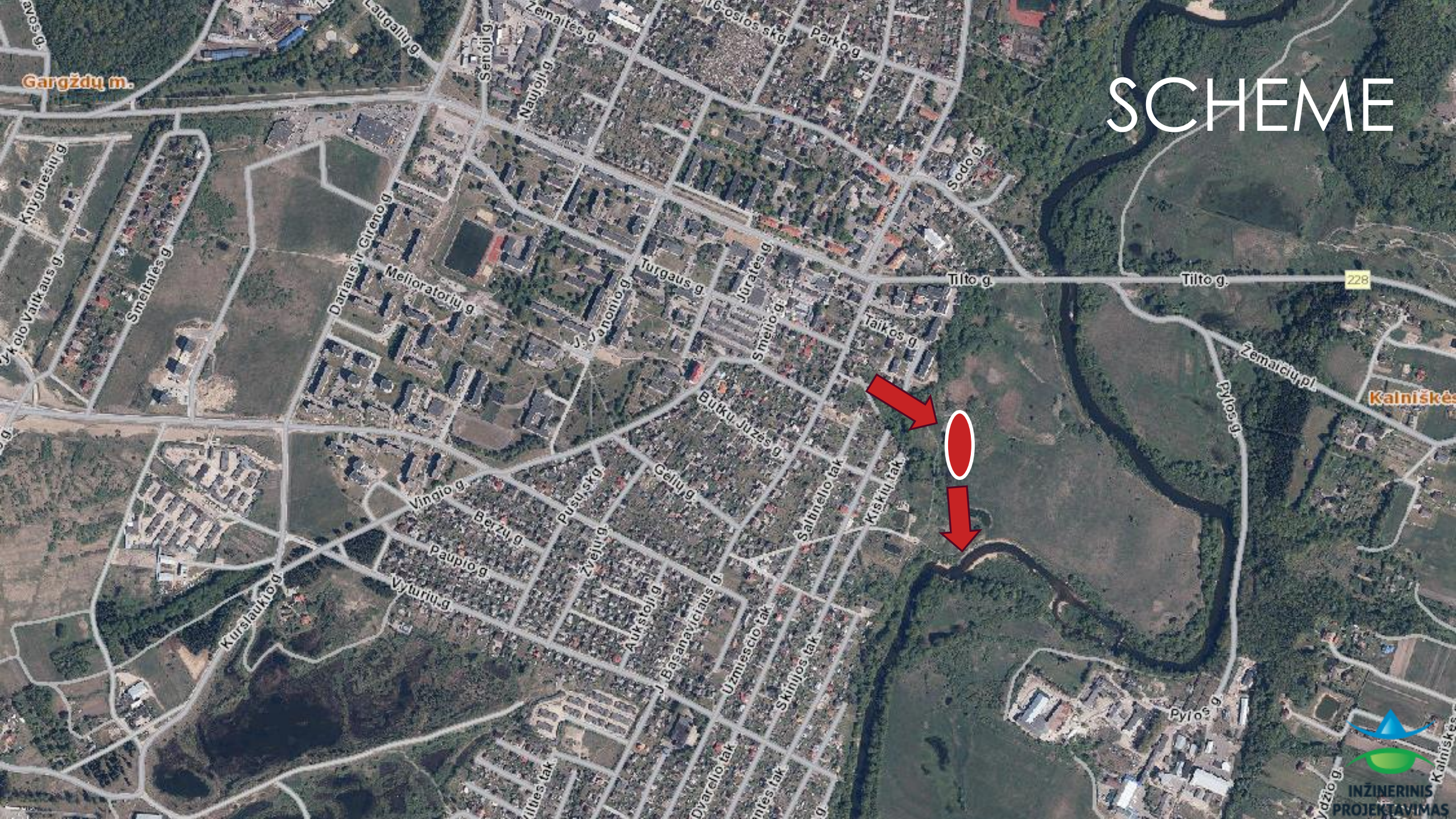
Director Karolis Mickevičius

Project Manager Jonas Veigneris

# TECHNICAL DATA

- ▶ Surface water catchment area – **110 hectares**;
- ▶ Calculated instantaneous flow of surface water – **1,34 m<sup>3</sup>/s**;
- ▶ Retention pond area – **1040 m<sup>2</sup>**, volume – **1666 m<sup>3</sup>**;
- ▶ Main pond area – **7043 m<sup>2</sup>**, volume – **17400 m<sup>3</sup>**;
- ▶ Ratio of the volume of the retention pond and main pond ~ **1:10**;
- ▶ Planned duration of wastewater retention and treatment – **2 days**;
- ▶ Planned total wastewater over two days – **15000 m<sup>3</sup>**;

# SCHEME



Gargždų m.

228

Kalniškės





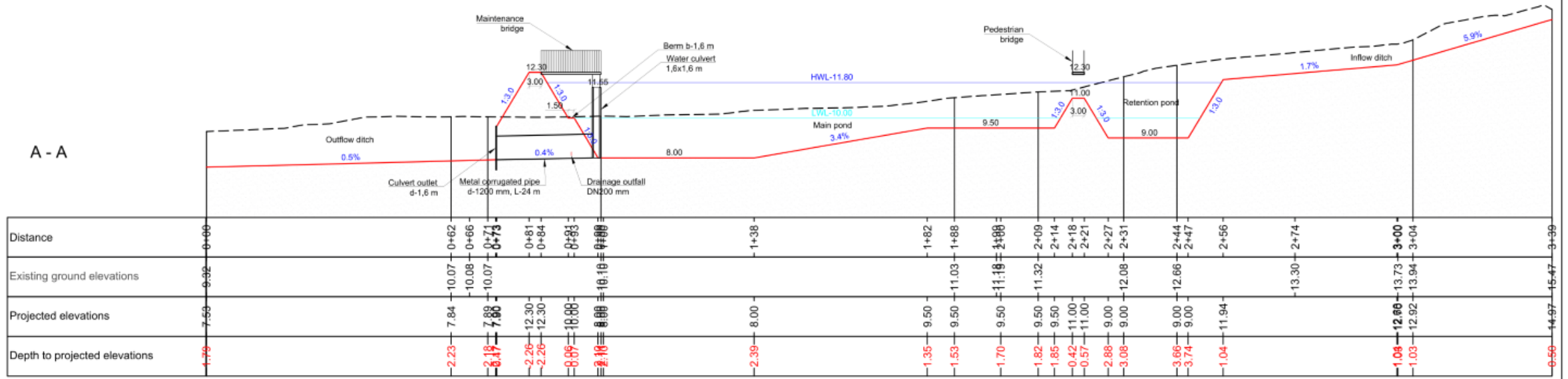
INŽINERINIS  
PROJEKTAVIMAS







A - A



# LONGITUDINAL PROFILE



# EXAMPLES



# EXAMPLES



# THANK YOU FOR YOUR ATTENTION

UAB „Inžinerinis projektavimas“

Director Karolis Mickevičius

Project Manager Jonas Veigneris

The „BSR Water Recycling Toolbox” was elaborated as part of the WaterMan project, which is co-financed by the European Union (European Regional Development Fund) and implemented within the Interreg Baltic Sea Region Programme. More information:

[eurobalt.org/WaterRecyclingToolbox](http://eurobalt.org/WaterRecyclingToolbox)  
[interreg-baltic.eu/project/waterman](http://interreg-baltic.eu/project/waterman)

WaterMan promotes a Baltic Sea Region-specific approach to water recycling, which makes use of the alternation of too much and too little water that has become typical for humid areas in the EU to strengthen the resilience of local water supply. Building on this approach, the project supports municipalities and water companies in adapting their water supply strategies.

*The contents of „BSR Water Recycling Toolbox” are the sole responsibility of the authors and can in no way be taken to reflect the views of the European Union, the Managing Authority or the Joint Secretariat of the Interreg Baltic Sea Region Programme.*

**Interreg**  
Baltic Sea Region



**Co-funded by  
the European Union**

 SUSTAINABLE WATERS  
**WaterMan**